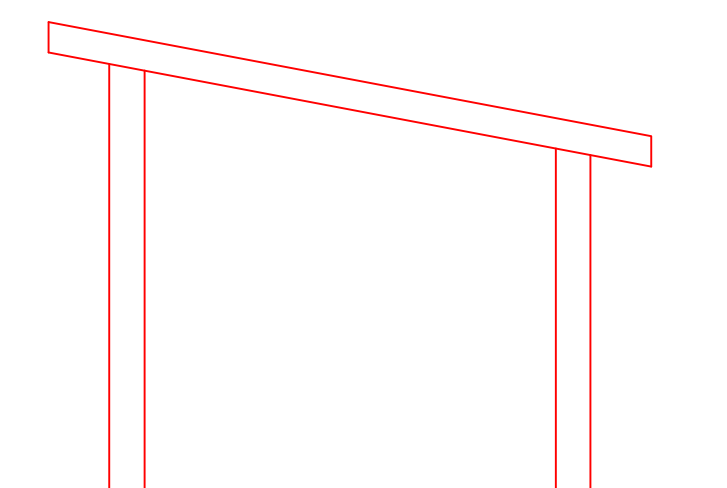
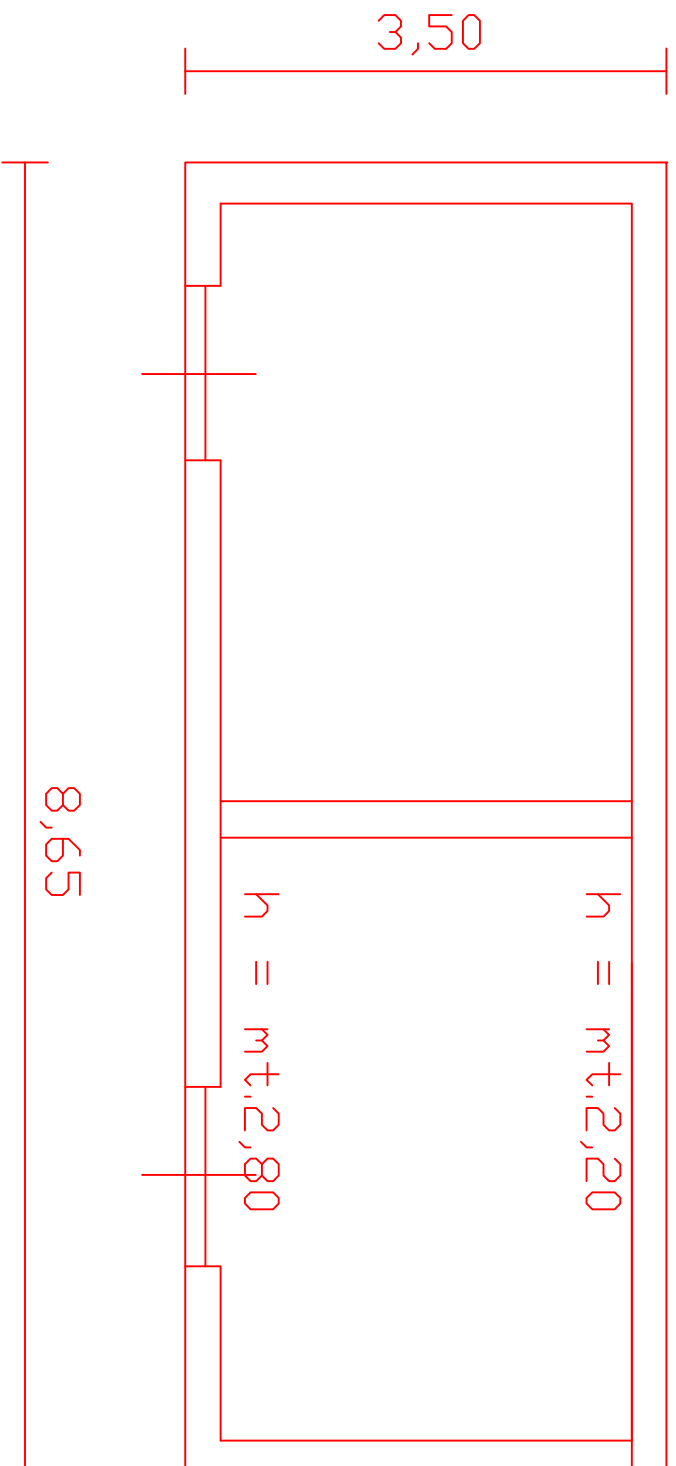
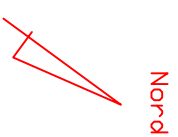


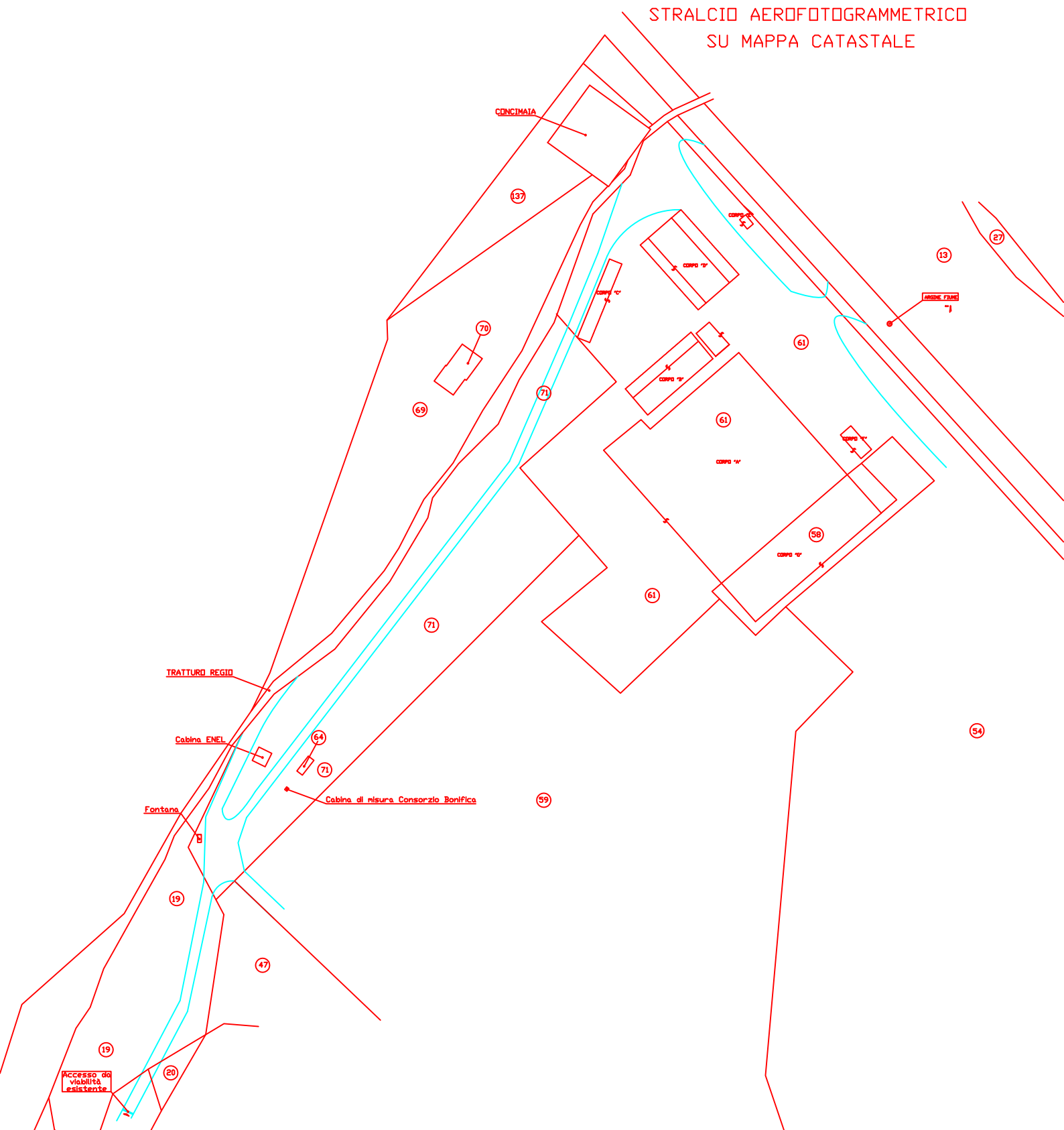
STALLA - Part. 71



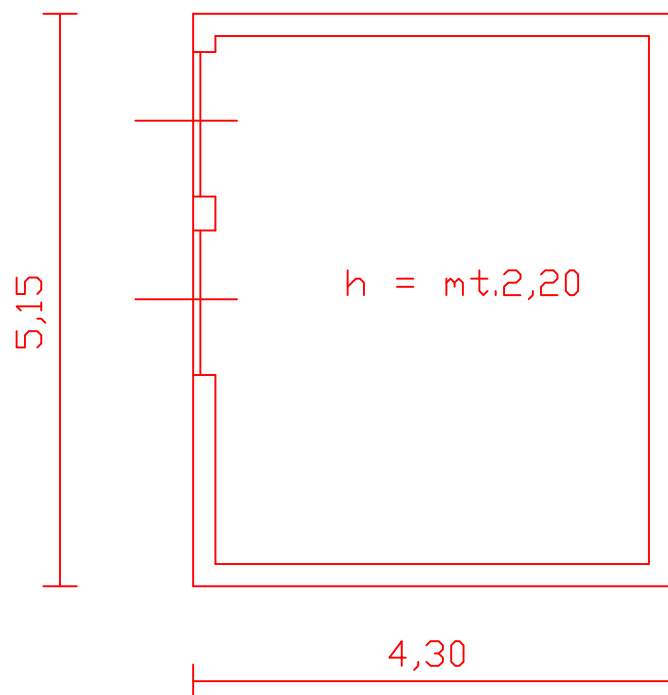
SUP. STALLA = mq. 30
VOL. STALLA = mc. 76



STRALCIO AEROFOTOGRAMMETRICO
SU MAPPA CATASTALE



CABINA ENEL



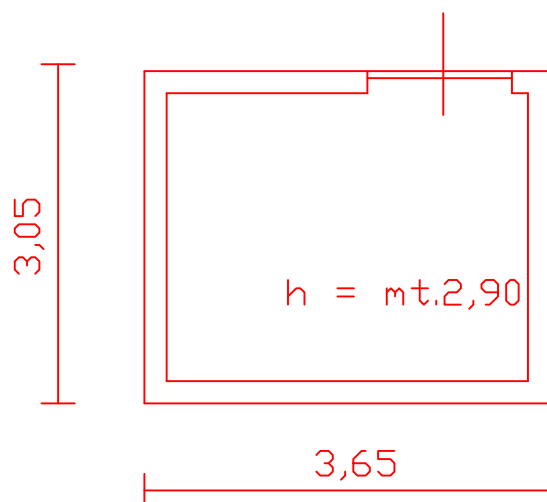
SUP. CABINA ENEL = mq. 22

VOL. CABINA ENEL = mc. 174

Nord



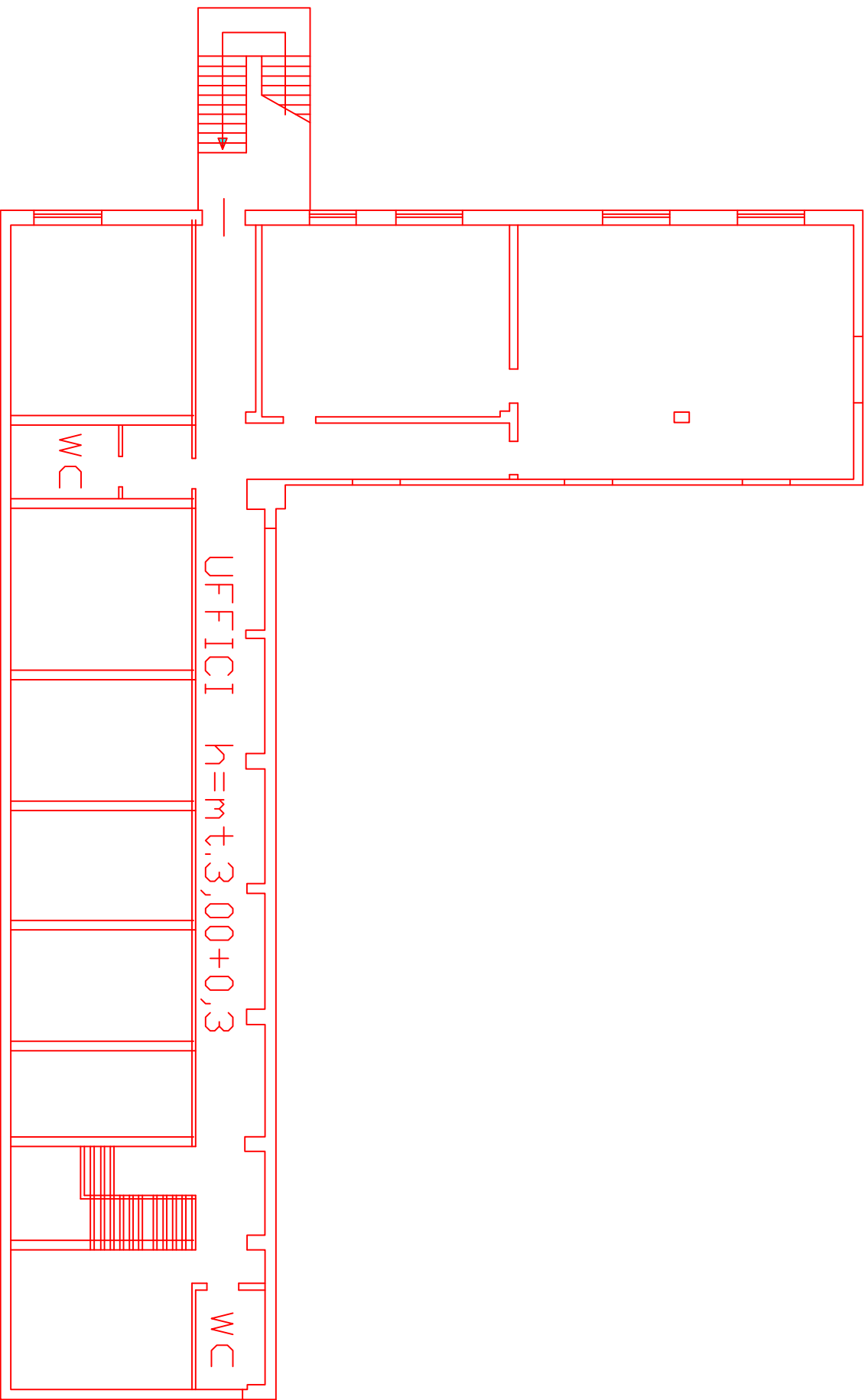
CABINA MISURA CONS. BONIFICA



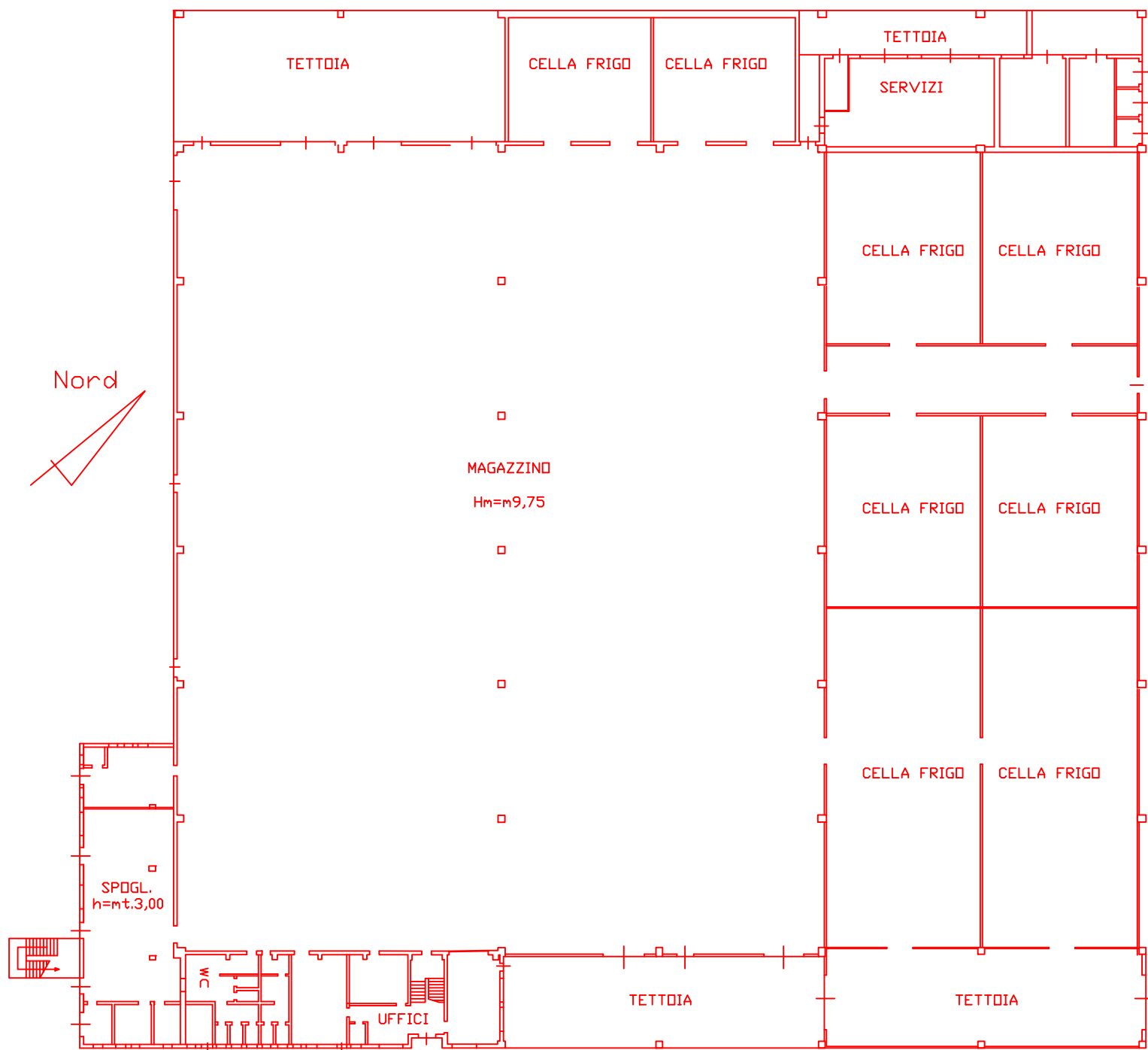
SUP. CABINA C.B. = mq. 11

VOL. CABINA C.B. = mc. 32

PIANO PRIMO CORPO "A"



SUP. UFF. I° PIANO = mq. 344
VOL. UFF. I° PIANO = mc. 1,135
SUP. SCALA EST.= mq. 16

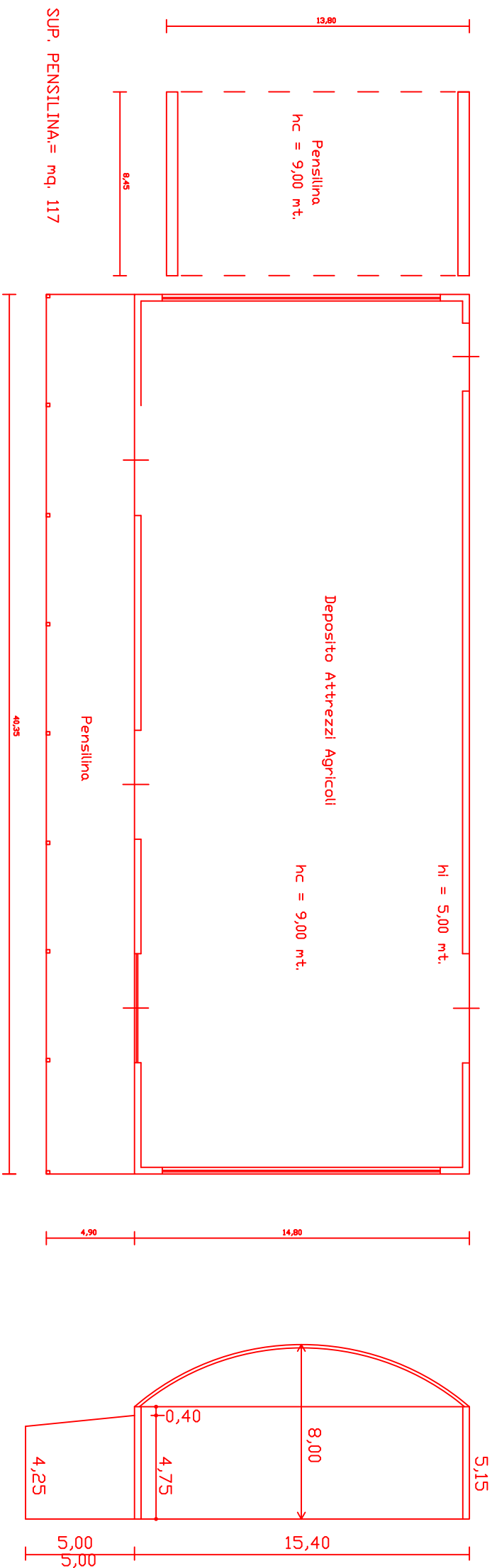


SUP. UFF.-SERV. PIANO T.= mq. 344
 VOL. UFF.-SERV. PIANO T. = mc. 1.135
 SUP. SCALA EST.= mq. 16

SUP. MAGAZZINO.= mq. 2.989
 VOL. MAGAZZINO = mc. 29.143
 SUP. CELLE FRIGO= mq. 1.646
 VOL. CELLE FRIGO = mc. 16.058
 SUP. SERVIZI ESTERNI= mq. 207
 VOL. SERVIZI ESTERNI = mc.1.858

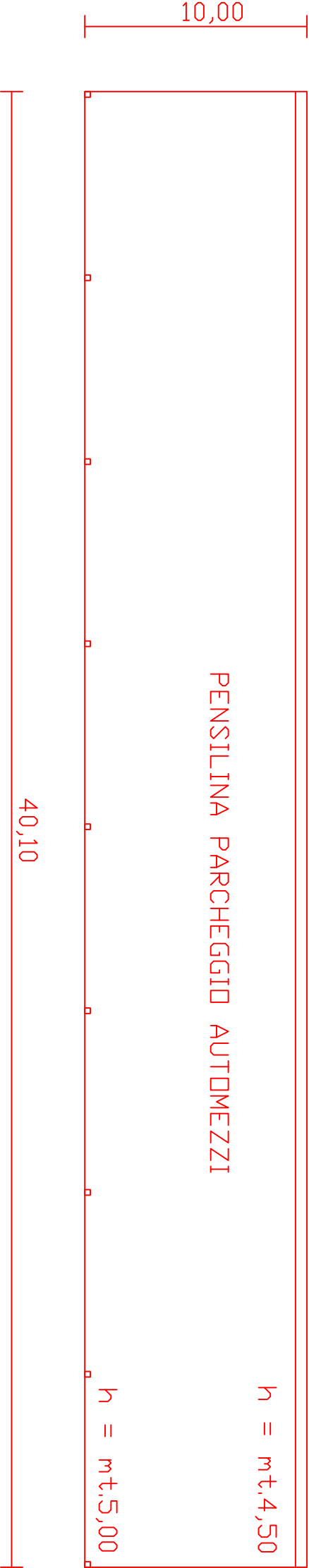
SUP. TETTOIE= mq. 649

CORPO "B"



PLANIMETRIA CORPO "C"

Fg. 62 p.lla 61

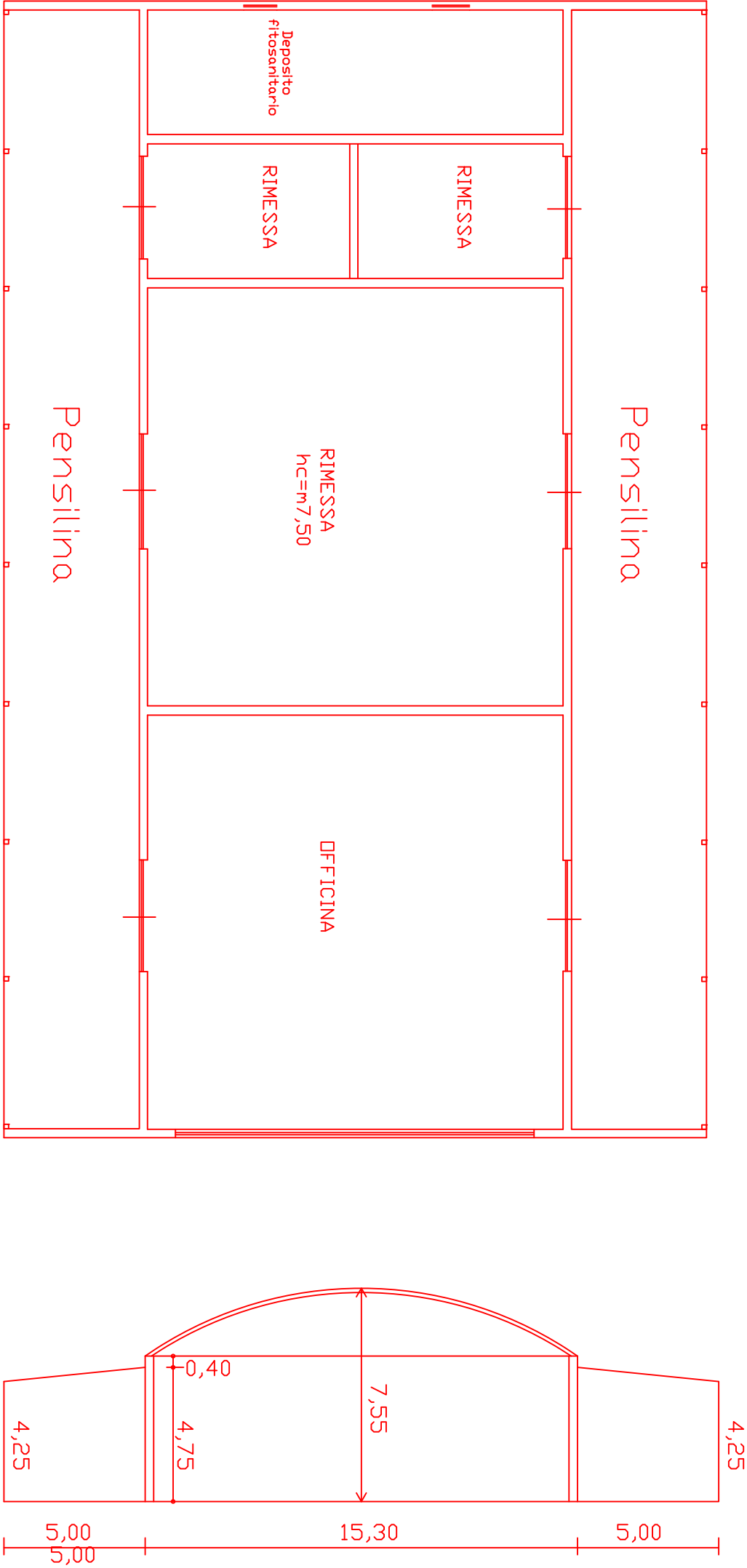


SUP. PARCHEGGIO = mq. 401

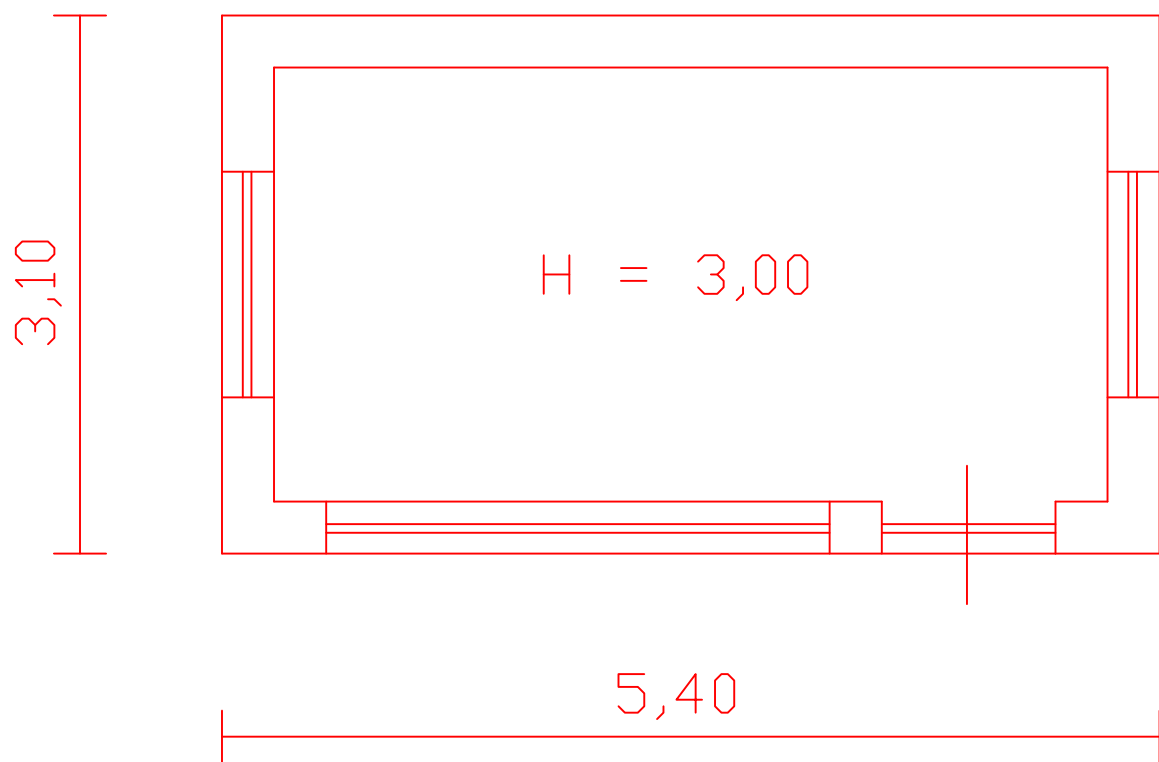
h = mt.4,50

h = mt.5,00

PLANIMETRIA + SEZIONE CORPO "D"



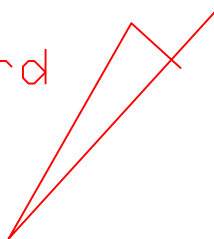
CORPO "E" - PESA



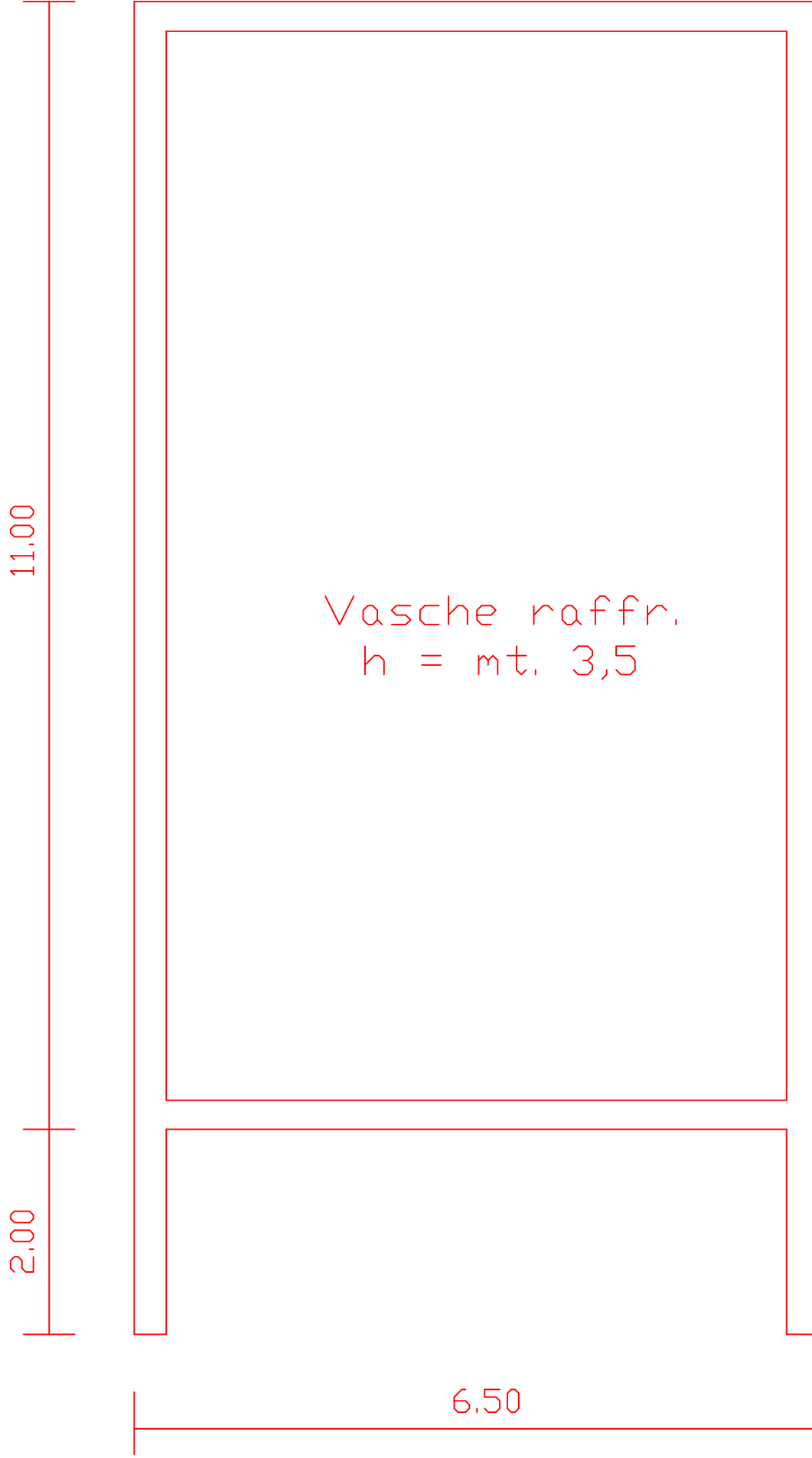
SUP. PESA = mq. 17

VOL. PESA = mc. 50

Nord



CORPO "F"

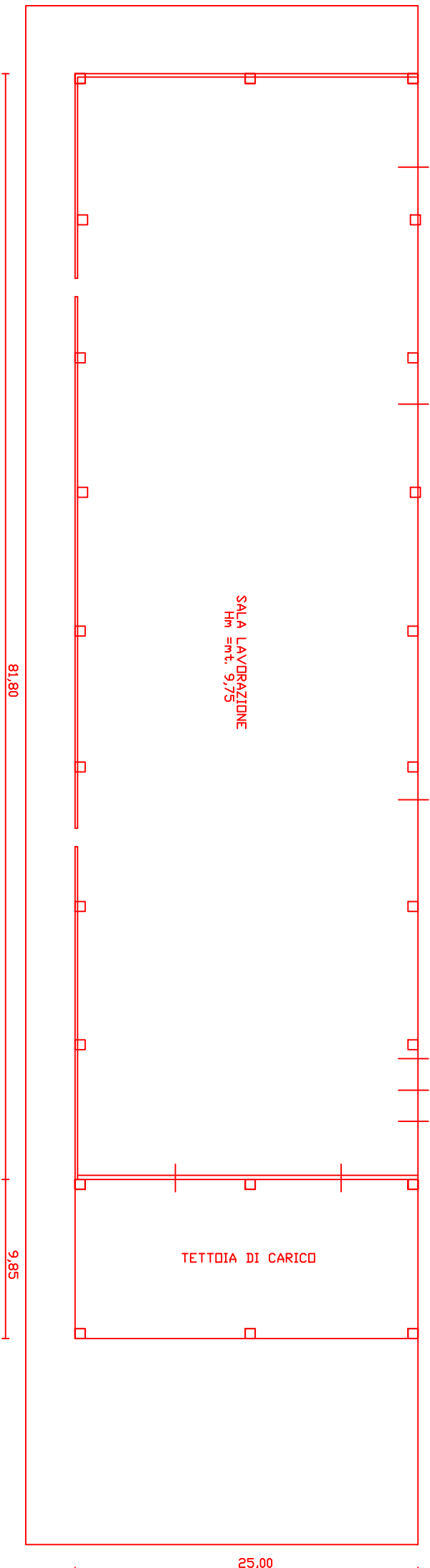


SUP. VASCA = mq. 84
VOL. VASCA RAFFR. = mc. 396

CORPO "G" - SALA LAVORAZIONE

SALA LAVORAZIONE
Hm = mt. 9,75

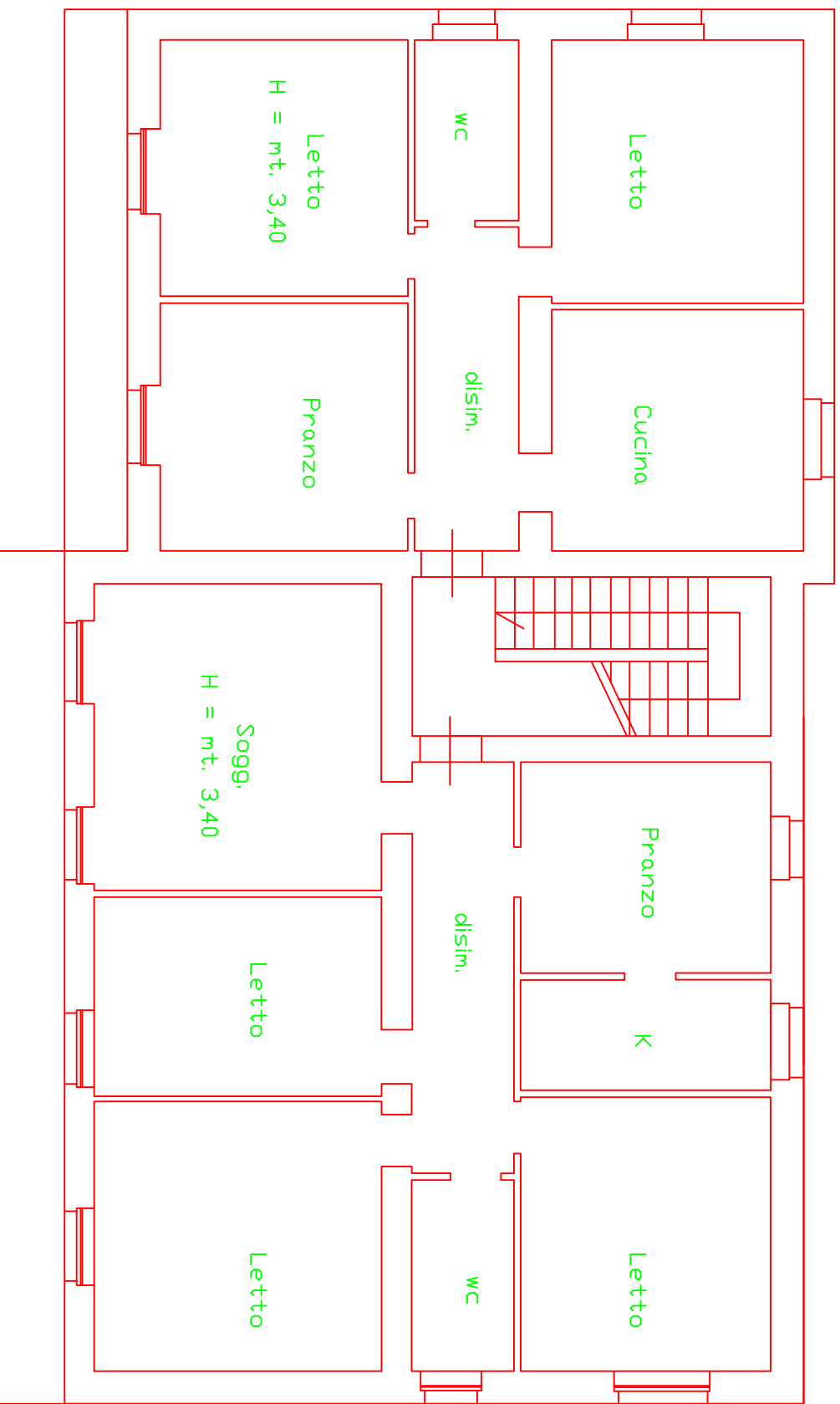
TETTOIA DI CARICO



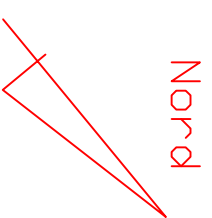
SUP. SALA LAV.= mq. 2,045
VOL. SALA LAV.= mc. 19,427

SUP. PENSTILINA= mq. 250

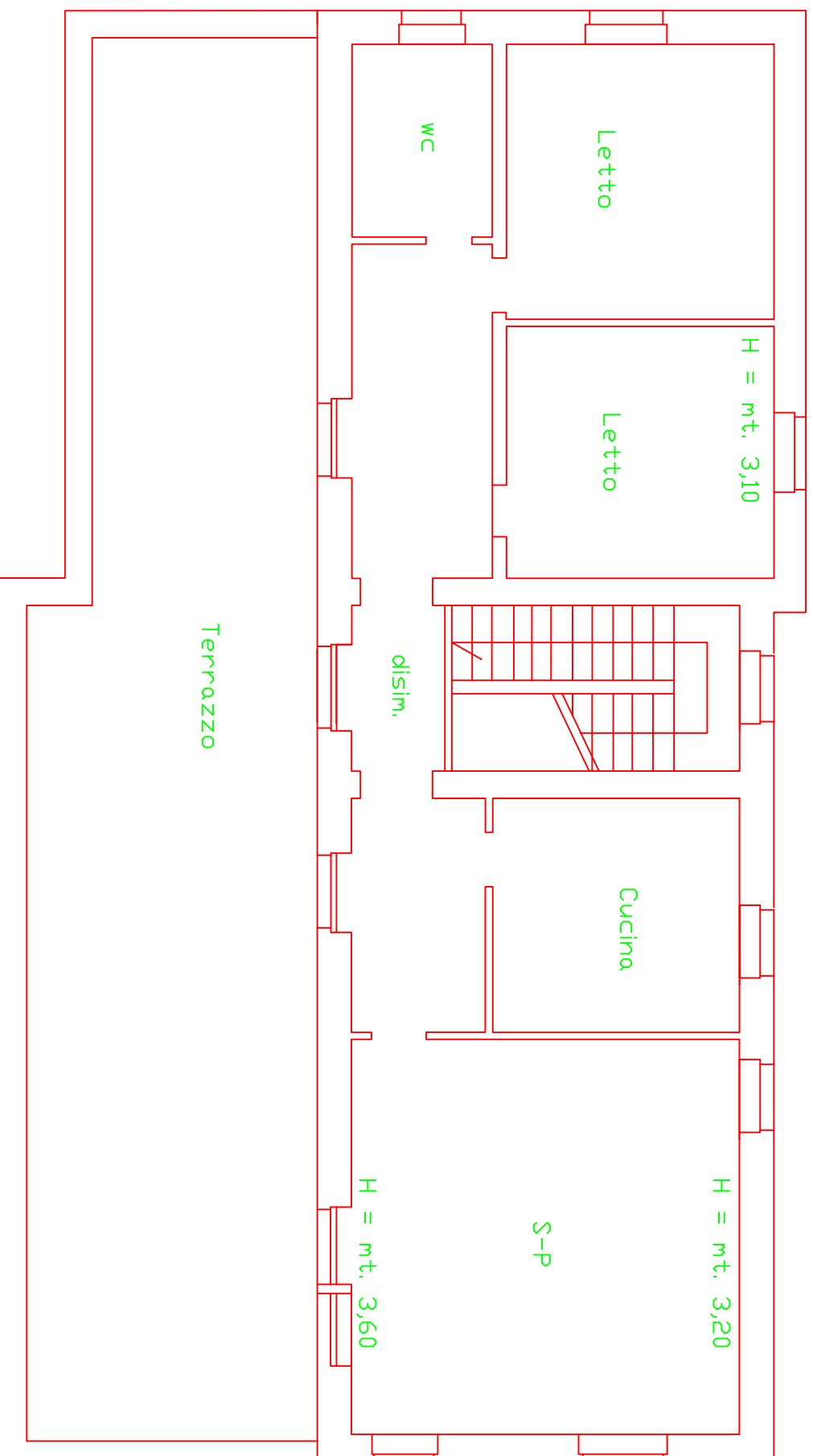
PIANO PRIMO



SUP. LORDA DI PIANO = mq. 246
VOLUME LORDO DI PIANO = mc. 910
SUP. BALCONI = mq. 21



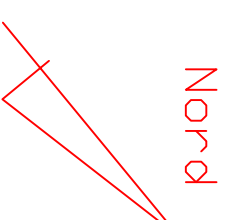
PIANO SECONDO



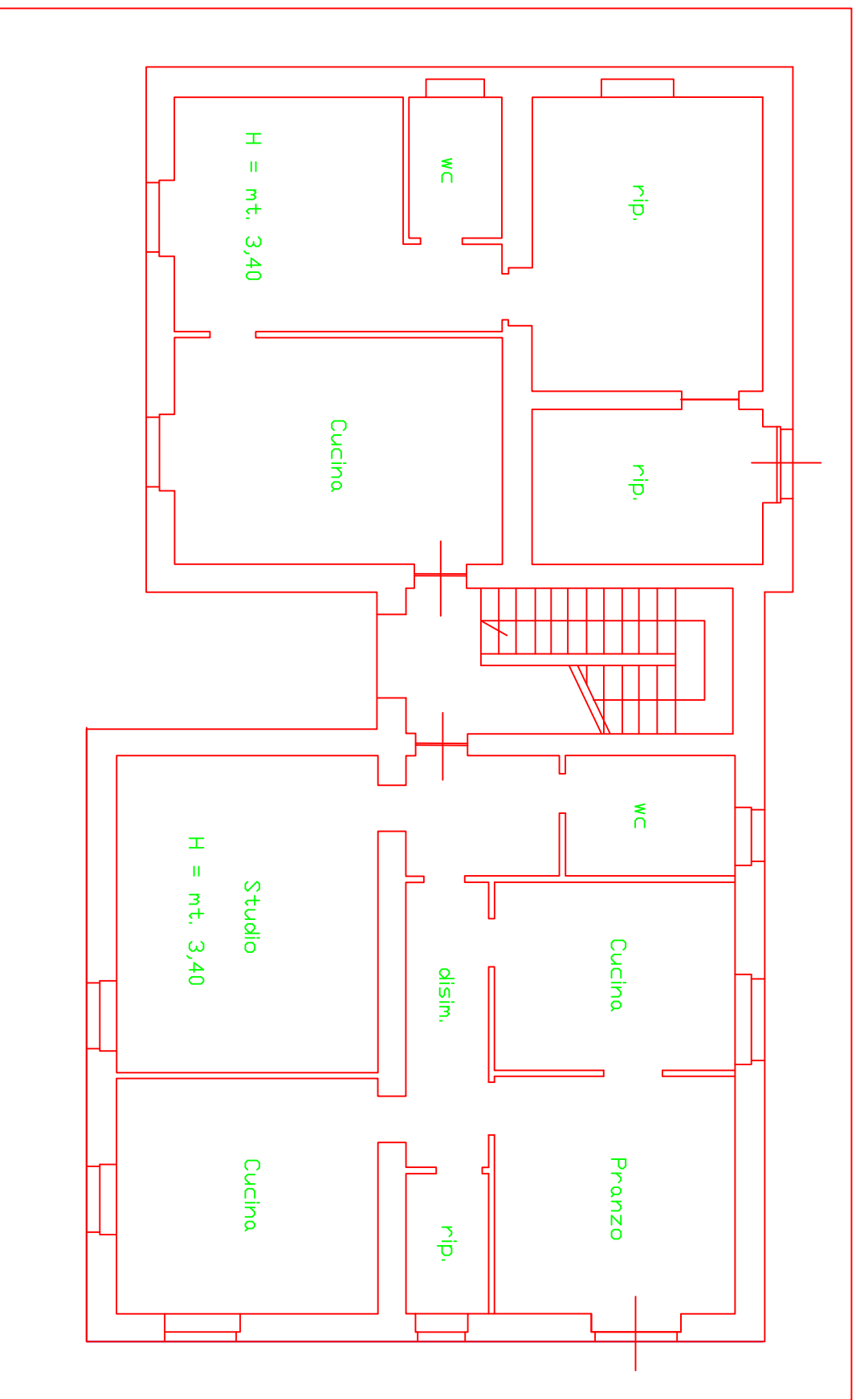
SUP. LORDA DI PIANO = mq. 58

VOL. $[58 \times (3,9 + 3,5) / 2] = mc. 215$

SUP. TERRAZZA = mq. 95



PIANO TERRA



SUP. LORDA DI PIANO = mq. 234

VOLUME LORDO DI PIANO ($H=3,70$)= mc. 866

